



- Perfect heat & pressure distribution
- Single plate 40x50 cm (16x20")
- Inflating membrane Plate
- User friendly
- Automatic opening
- Very high pressure
- Robust frame
- Relieves adjustment (button, zips, pockets, ...)
- Effortless closing
- Ideal for small to medium productions
- Manufactured in France
- 2-year guarantee on the machine
- 10-year guarantee on heating elements



Set programs



Membrane



SmartTouch®
Controller



Pre-heat time

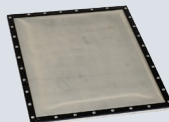
OPTIONAL ACCESSORIES



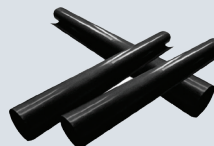
Support table



Compressor



30x35cm
membrane plate



Teflon Sheet



Nomex® cover (included)

Email

sales@sefa.fr
support@sefa.fr
www.sefa.fr

Phone

Office : + 33 4 68 74 05 89
Fax : + 33 4 68 74 24 08

Address

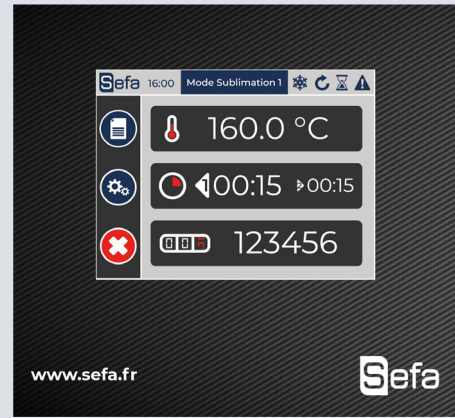
SEFA SAS
Z.I. PASTABRAC
11 260 ESPERAZA (FR)



TECHNICAL CHARACTERISTICS

Type	Manual - Auto release
Operation	Clamshell opening
Platen size	40x50 cm / 16x20 "
Max thickness	15 mm
Weight	62 Kg
Pressure	600 g/cm ²
°C / °F Max	220 °C / 429 °F
Power	2500 W
Power supply	240 V Single-phase
Amperage	11 A
Applications	Flex, direct-to-garment, pre-treatment, sublimation on rigid substrate, textile sublimation, laser transfer, screen printing
Dimension	941x868x442 mm

SETTINGS



New SmartTouch® controller developed by Sefa

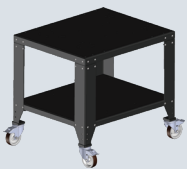
Recipes menu with adaptive regulation parameters depending on the job: flex, sublimation on textile, sublimation on rigid substrates, DTG...

Advanced electronics

- Fully editable recipes menus
- Independent time for each plate
- Multi timer (up to 2 different times)
- Cycles counters
- Stop cycle function
- ECO GREEN mode

From 0 to 600 s (precision +/- 1%).
From 15 to 220°C (precision +/- 1%).
Heating time to reach 180°C : 10 min.

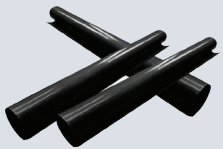
OPTIONAL ACCESSORIES



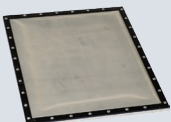
TAB-98 LITE
Support table (optional castors available).



HOU-4555
Nomex Cover for 40x50cm membrane plate.



TOI-4050
Teflon protection sheet for 40x50cm heat platen.

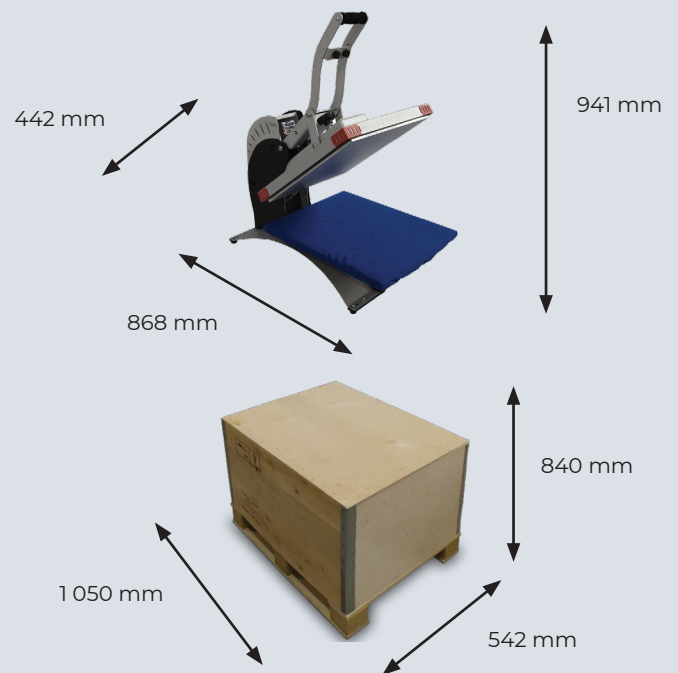


PLA-3035 AIRCLAM
Membrane plate
30 x 35 cm.



COMP-37
Silent compressor 42dB 24L.
37L/min.

DIMENSIONS



Box weight CAI-011 : 19 kg