



SmartTouch®
Controller



- Perfect heat & pressure distribution
- Suitable for balls, caps, logos and shoes
- Quick and tool-free change of elements
- User friendly
- Automatic opening by electromagnet
- Reversible C-shaped part & Quick Release
- Robust frame
- Suitable for transfer applications & sublimation (depending on mounted elements)
- Ideal for small productions
- Manufactured in France
- 2-year guarantee on the machine
- 10-year guarantee on heating elements



Set programs



QuickRelease®
system



Fast heat up



Pre-heat time

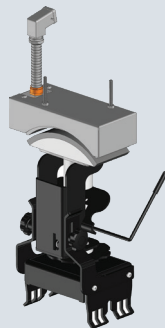


Electromagnetic

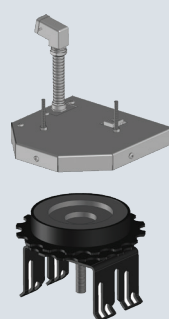
OPTIONAL ACCESSORIES



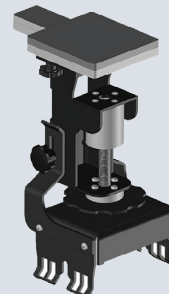
Support table



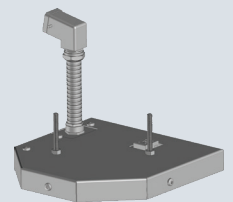
CAP Accessory



BALL Accessory



SHOE lower plate



FLAT heating
plate (Shoe/logo/ball)

Email

sales@sefa.fr
support@sefa.fr
www.sefa.fr



Phone

Office : + 33 4 68 74 05 89
Fax : + 33 4 68 74 24 08



Address

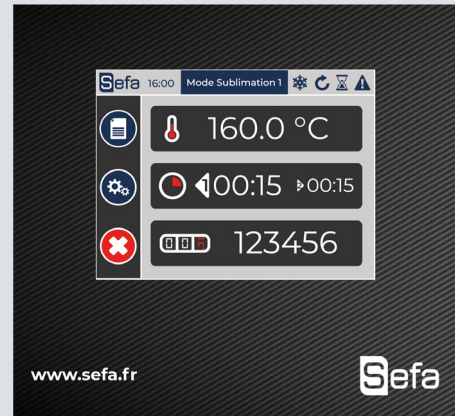
SEFA SAS
Z.I. PASTABRAC
11 260 ESPERAZA (FR)



TECHNICAL CHARACTERISTICS

Type Operation	Electromagnetic Clam
Platen size (Sold separatly)	Ball : Size 0 to 7 + Rugby Cap : 17 x 8 cm (EU & US version) Logo : 13 x 13 cm
Weight	24 Kg / 53 lb
°C / °F Max	220 °C / 429 °F
Power	600 W
Power supply	240 V Single-phase
Amperage	3 A
Applications	Direct-to-garment, flex, textile Sublimation, laser transfer, screen rinting
Dimensions	899x503x231 mm 35x20x9 "

SETTINGS



New SmartTouch® controller developed by Sefa

Recipes menu with adaptive regulation parameters depending on the job: flex, sublimation on textile, sublimation on rigid substrates, DTG...

Advanced electronics

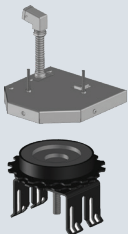
- Fully editable recipes menus
- Independent time for each plate
- Multi timer (up to 2 different times)
- Cycles counters
- Stop cycle function
- ECO GREEN mode

From 0 to 600 s (precision +/- 1%).
From 15 to 220°C (precision +/- 1%).
Heating time to reach 180°C : 10 min.

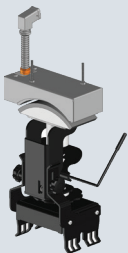
OPTIONAL ACCESSORIES



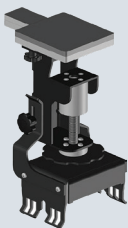
TAB-98 LITE
Support table.



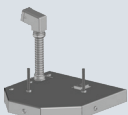
ACC-BALL
Upper & lower ball accessory for Clam Sport.



ACC-CAP CB / US
Upper & lower cap accessory for Clam Sport (European and US version available).



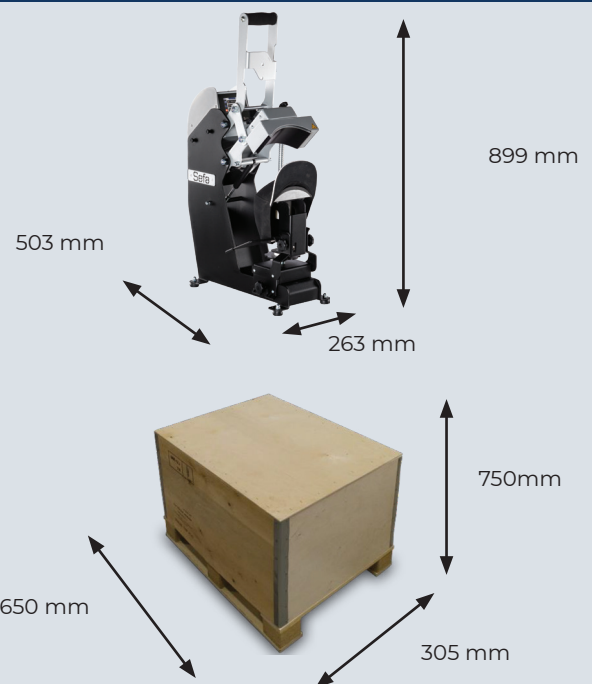
ACC-SHL-CB
Lower logos & shoes accessory for Clam Sport.



PLA-6CB
Heating logos & shoes accessory for Clam Sport.



DIMENSIONS



Box weight CAI-CLAMBALL : 15 kg